

Science - Year 1 - What do I know about plants?

Glossary:

- Plant – A living thing that grows in soil, has leaves and roots, and needs water and light from the sun to live
- Tree – A tall plant that has a wooden trunk and branches that grow from its upper part
- Root – The part of a plant that grows down into the earth to get water and nutrients
- Leaf – The flat, usually green part of a plant joined at one end to the stem
- Trunk – The main woody stem of a tree
- Branch – The part of a tree that grows out from the main trunk
- Seed – A small round or oval object produced by a plant. When planted, a new plant can grow
- Bark – The protective outer covering of the trunk, branches and roots of trees
- Deciduous – A tree which loses its leaves in Autumn and grows new ones in Spring
- Evergreen – A plant, bush or tree which has leaves for the whole year
- Flower – The blossom of a plant
- Fruit – These are made by a plant and most come from flowers
- Petal – A brightly coloured leaflike outer part of a flower
- Stem – Stick-like central part of a plant that grows above the ground from which leaves grow
- Soil – The top layer of the earth
- Water – A clear liquid that falls from the sky as rain, and is very important for animal and plant life



All trees are plants but not all plants are trees.

A tree is a special type of plant.

What does a plant need to grow?



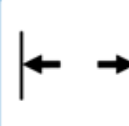
water



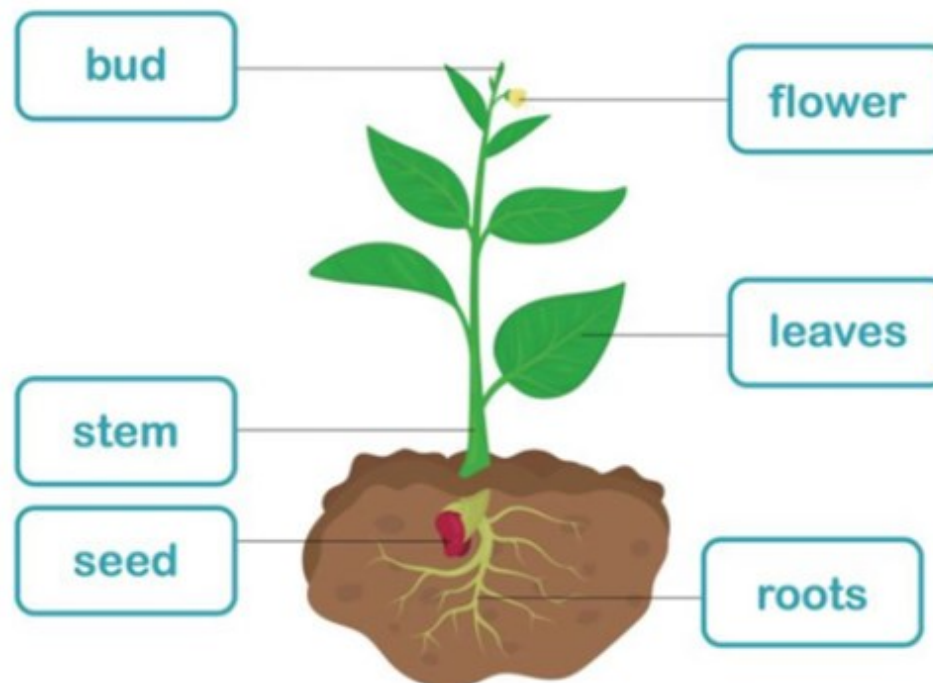
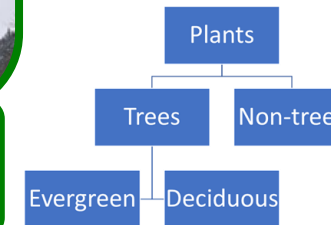
nutrients



light



space



Sticky Knowledge:

- To know and describe the basic structure of a variety of trees
- To know how to identify and classify
- To know and name deciduous and evergreen trees
- To be able to explain the difference between deciduous and evergreen trees
- To know and describe the basic structure of a variety of common flowering garden plants
- To know what the term 'prediction' means
- To know what the term 'observe' means and give an example