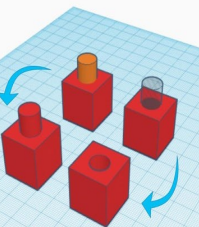


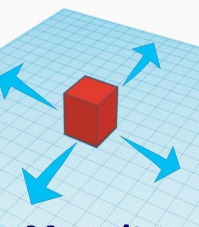
Creating holes



View it



Group it

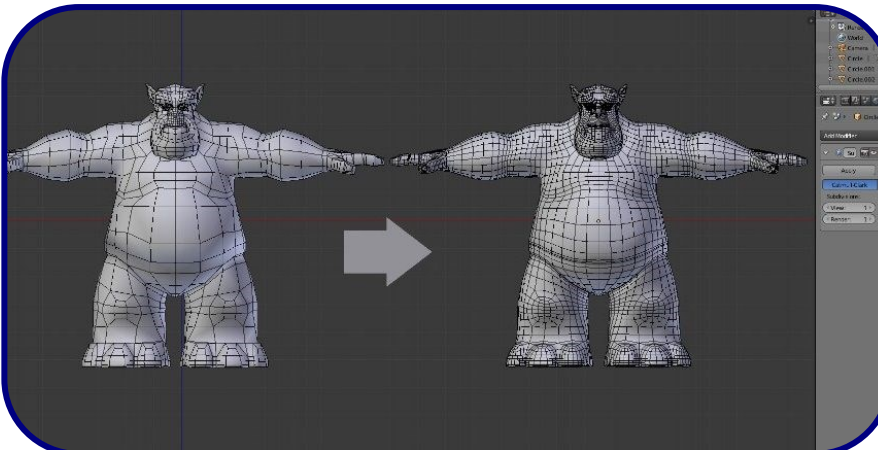


Move it

3D modelling is used in a variety of industries from animating movies, to creating tools and spare equipment onboard the international space station to helping doctors 3D print organs.

Sticky Knowledge:

- To know computer aided design can make 3D models.
- To know what a spreadsheet can organise and sort data.



Glossary:

- 3D modelling:** is the use of software to create a virtual three-dimensional model of some physical object
- Data:** A letter, word, number etc. that has been collected for a purpose, but stored without context.
- Input:** A piece of hardware used to control, or send data to, a computer
- Output:** A piece of hardware that is controlled by outputs from a computer

Spreadsheets

A spreadsheet lets you **present data** neatly and **solve calculations** quickly to find out **statistics**.

column B

	A	B	C	D
1	Supermarket Shop			
2				
3	Item	Price	Quantity	Cost
4	Apple	£0.40	5	=B4*C4
5	Carrot	£0.30	2	=B5*C5
6	Potato	£0.10	6	=B6*C6
7	Steak	£4.50	1	=B7*C7
8	Chocolate bar	£1.50	2	=B8*C8
9			Total Cost	=SUM(D4:D8)
10			Cash Given	£15.00
11			Change Due	=D10-D9

table

formula

row 6

function

cell D11