

Year 6 - Art - How can we learn how to use the techniques of different artists to create effective illusion in a painting?

Historical and cultural development of art

Cave Paintings
(30,000 BC)



Citrus Fruit (63-79 BC)



Arcimboldo (1591)

Vertumnus



Vermeer (1665)

Girl with a Pearl Earring



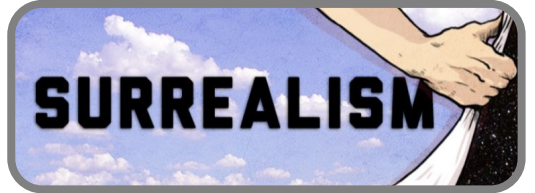
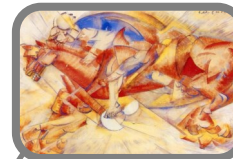
Vincent van Gogh (1883)

Bulb Fields



Carlo Carrà (1913)

The Red Horseman



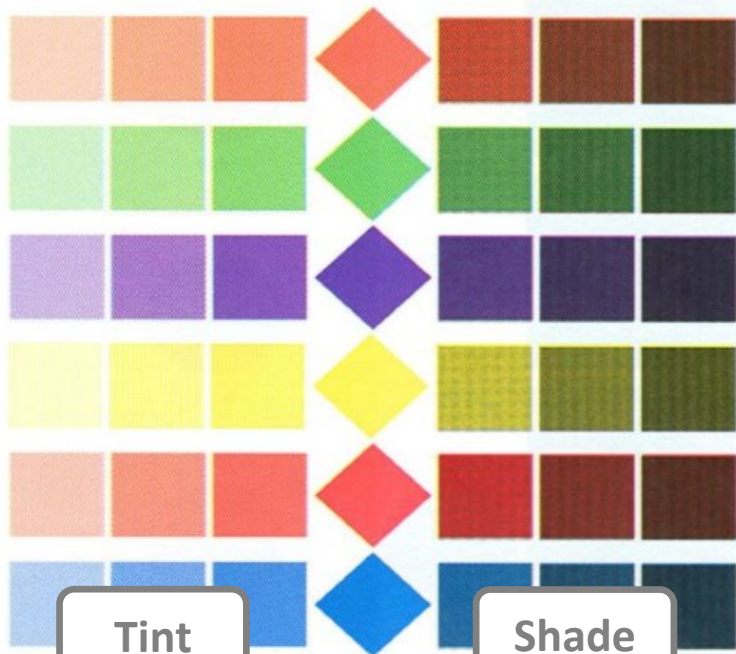
Sticky Knowledge:

- Know how artists use paint to show illusion
- Know and explain the style of Surrealism.
- Know when Surrealism started and ended.
- Name some artists who influenced Surrealism
- Know how Cubism has moved to Surrealism



Glossary:

- Surrealism – This was a cultural movement where artists painted unnerving, illogical scenes, creating strange creatures from everyday objects, and developing painting techniques that express unrealistic and dream like images.
- Illusion – A drawing or painting that has the power to trick our minds into thinking we're seeing something.
- Shade – Shade is a **hue or mixture of pure colours to which only black is added**. It contains no white or grey. Shade darkens the colour, but the hue remains the same.
- Tint - Tints are **created when white is added to any hue on the colour wheel**. This process lightens the hue.
- Tone – In painting, tone refers to the relative lightness or darkness of a colour.



Rene Magritte 1898—1967



Surrealism 1924—1966